

Battersea

*Stewarts Lane Industrial Estate
100 Silverthorne Road, Battersea
London SW8 3EH*



The Battersea site is in a large industrial area, which is already being used by another concrete batching plant, Tarmac, and a Day Aggregates site adjoining the London Concrete plant.

There was a noticeable amount of HGV traffic coming in and out of this site belonging to London Concrete and other companies. Battersea has historically been a location for heavy industry hence the now disused power station as well as many active heavy industrial sites nearby.

Travelling through Battersea it soon becomes apparent that there is no comparison between the village like atmosphere of Crouch End to this area of Battersea.

In the late afternoon, I noticed from Queenstown Road into Silverthorne Road how fast mixer lorries were coming round the corner – this made crossing Silverthorne Road extremely dangerous. As far as I am aware the drivers are paid by the load and speed is of the essence – what chance has a child of crossing such a road safely?

Battersea | Silverthorne Rd. | 3 November 2005



*3 mixer lorries travelling
simultaneously along the narrow
part of Silverthorne Road.
Outside Stewarts Lane Industrial
Estate*

Battersea | Stewarts Lane entrance | 3 November 2005



Entrance to the Stewarts Lane Industrial Estate showing the Tarmac concrete batching plant, which is visible from Silverthorne Road.

Battersea power station towers on the right.

Battersea | Stewarts Lane entrance | 3 November 2005



*View from the entrance into
Stewarts Lane Industrial Estate.
Bus Depot visible on the right.
London Concrete batching plant
straight ahead.*

Battersea | London Concrete site | 3 November 2005



The entrance to London Concrete's site is situated deep within Stewarts Lane with Day Aggregates right next door. Large heap of aggregates stored in open air is clearly seen on the left hand side of the picture.

Battersea | Other heavy industries | 3 November 2005 |



*Stewarts Lane Industrial Estate
as viewed from Pensbury Place
showing an unsightly car
breakers yard.*

Battersea | Other heavy industries on site | 3 November 2005



Tarmac is another concrete batching plant situated at the entrance to Stewarts Lane Industrial Estate.

This plant was built prior to London Concrete moving to the site and is an indication of the type of heavy industry associated with the sites London Concrete is typically occupying.

Note the contrast between the entrance to Stewarts Lane Industrial Estate and the entrance to Cranford Way which is more in keeping with the residential area it is in.

Greenwich

*Horn Lane, Charlton,
Greenwich
London, SE10 0RT*

The industrial site in Greenwich is a large one and is well away from any densely residential area. It is well served by a suitable road network. It is a couple of minutes drive from the A12 Blackwall Tunnel Approach Road, the A206 Woolwich Road and the Bugsby Way dual carriageway.

The River Thames is the boundary to the north of this site.

This is the largest London Concrete site I have seen. There are other heavy industries on this site which include amongst others, an Aggregates Depot, as well as a Concrete Crusher Plant.



Greenwich | London Concrete | 9 December 2005

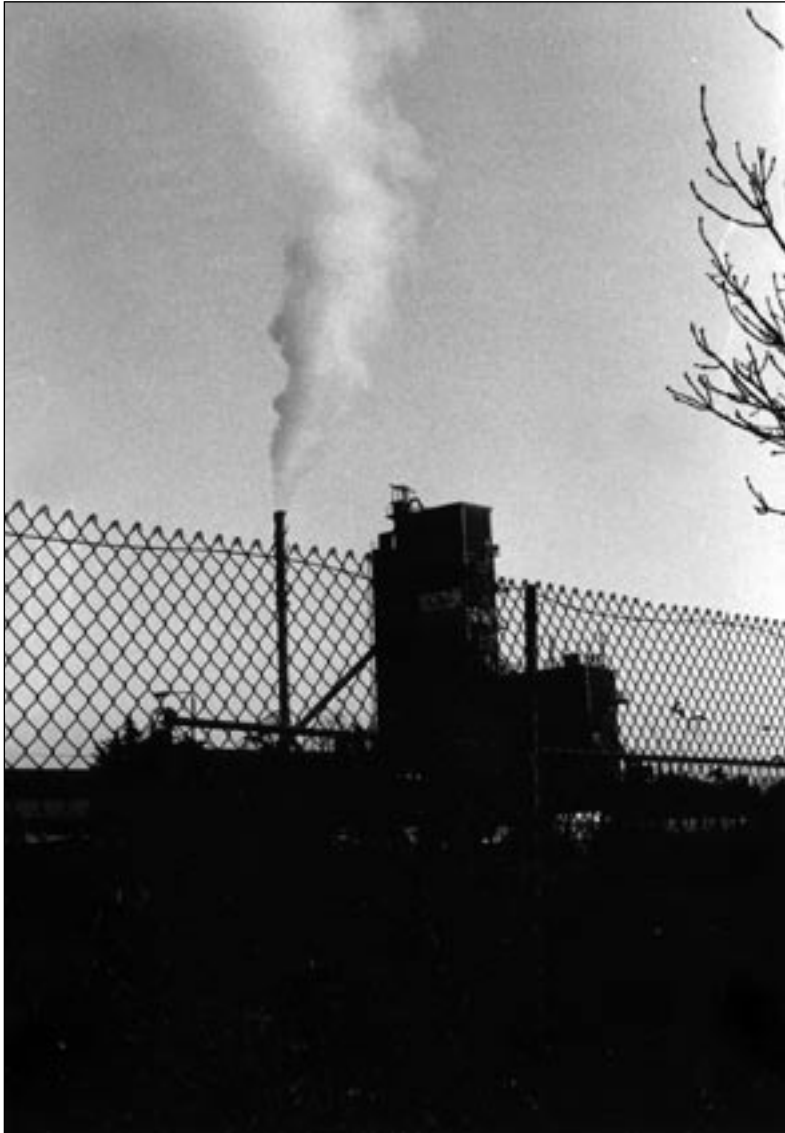


*General view of rear of Horn
Lane Industrial Estate in
Greenwich.*

Greenwich | London Concrete | 9 December 2005



*Deeper in the Horn Lane
Industrial Estate in Greenwich
an Aggregates Depot is situated
right next to the London
Concrete plant. Huge mounds of
raw materials can be seen stored
open to the elements, potentially
blowing to all directions with
every gust of wind.*



In the pictures to the left the smelly Murphy's Waste is located at the entrance to the Horn Lane Industrial Estate.

Another view of the same chimney which appears on the previous page shows some sort of emissions.

It is my understanding that any emissions from an industrial process are potentially polluting.

Bow

*Bow Midland Depot,
Wick Lane, Bow,
London, E3 2TQ*



The Industrial estate at Bow is a very large one. It is right beside the A12 and is home to many other heavy industrial businesses.

London Concrete's batching plant, like other London Concrete plants, is right next to an aggregate depot which stores raw materials in the open air. Again the site is not in a densely residential area.

Spillage of ready mix concrete can be seen on many of the local roads surrounding the site.

Bow | A12 & London Concrete Plant | 8 November 2005



London Concrete batching plant in Bow viewed from the far side of the A12 showing full width of carriageway.



Bow | A12 & Wick Lane | 2 January 2006



On the left London Concrete's plant can be seen at a distance behind the red billboard on Wick Lane.

Below spillage is visible on Wick Lane.



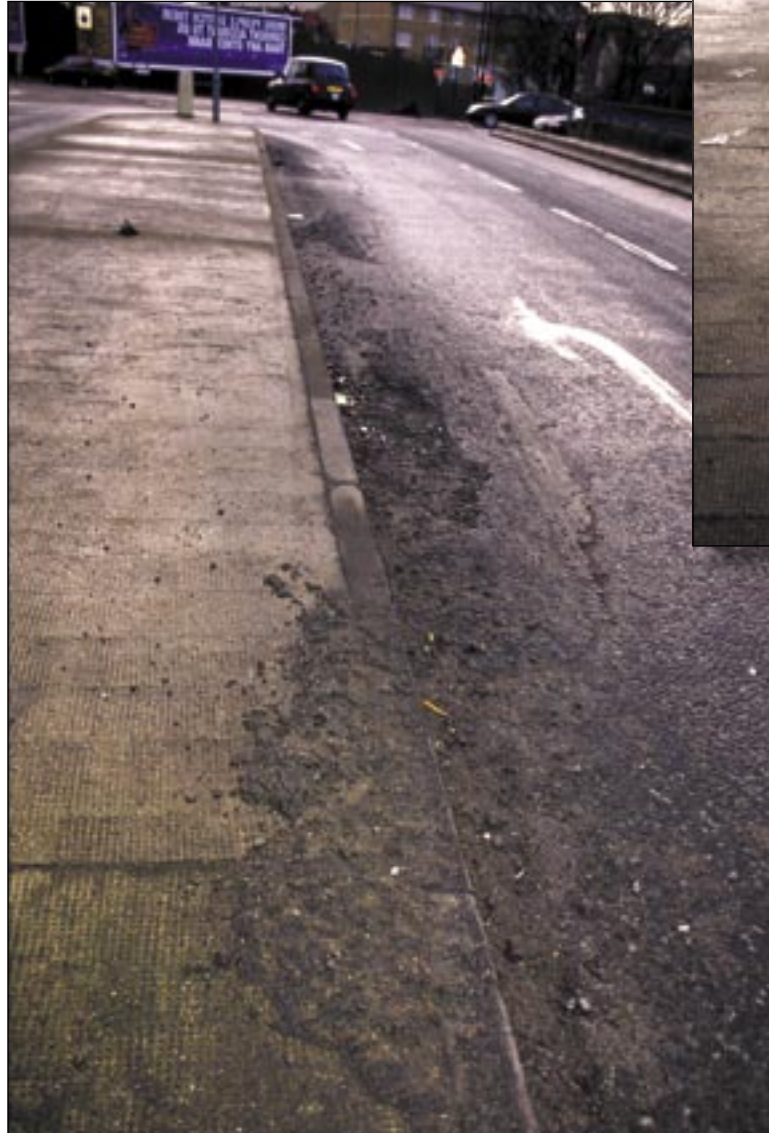
Bow | Wick Lane | 2 January 2006



On the left Wick Lane above the A12, featuring visible spillage on the side of the road.



Bow | Wick Lane | 2 January 2006



The pictures here are taken on Wick Lane very near the entrance to the London Concrete Batching Plant

Bow | London Concrete entrance | 2 January 2006



Watford

*Orphanage Road Sidings,
Off Reeds Crescent,
Watford, Hertfordshire, WD1 1LZ*



London Concrete's plant in Watford is surrounded by a large industrial estate to one side, the railway line to the other, Watford Junction Station, 2 large car parks, a multi-storey car park and superstores.

The site is a few minutes drive from the St. Albans Road (a dual carriageway) and a large intersection roundabout serving another dual carriageway.

There is no comparison with either Hornsey or Harringay station. Again, this is not a residential area such as the site in Hornsey.

Watford | London Concrete plant | 1 January 2006



The main picture shows a general view of the London Concrete plant from the Watford Junction Station car park.

The smaller picture shows the back of the plant.



Watford | London Concrete ready mix truck | 1 January 2006



The health warning sign is an obvious indication that the content of the mixer lorries is not as harmless as London Concrete would like us to believe and therefore not something which we want spilt on our roads and pavements.



Rear view of a London Concrete mixer truck.

32 tonne mixer trucks are no comparison with trucks which currently frequent Cranford Way.

Having a large number of unsightly HGVs in Hornsey will completely change the character of our local area.

Watford | Spillage on local road | 1 January 2006



Spillage, spillage, spillage...

These pictures were taken on Orphanage Road on the way out of the Watford site.

Heathrow

*Colnbrook Bypass,
Colnbrook, Slough,
Berkshire, SL3 0EB*

Gerrards Cross

*Wapseys Wood,
Oxford Road,
Gerrards Cross,
Buckinghamshire
SL9 8TE*



*London Concrete's batching plant in **Heathrow** is situated in a non-residential area and is just off the A4 close to the junction of the M4 and M25 motorways. The picture clearly shows no similarity to the Appeal site.*

*London Concrete's batching plant in **Gerrards Cross** lies in the Metropolitan Green Belt. It is located adjacent to the mineral processing plant area of the Wapseys Wood/Hyde Farm mineral extraction and waste management complex.*

The nearest residential properties lie approximately 400 metres to the south east at Moat Farm. The M40 motorway passes approximately 150 metres to the south.

London Concrete's licence to operate this plant is attached to the life of the quarry which is said to expire in 2012. Despite conditions on operating hours of weekdays 7:00 - 5:00 complaints have been made that London Concrete have been operating all night long without permission.

*Local residents state "unacceptably high noise levels being created by the concrete batching plant that it is apparent **over and above that created by proximity to the M40 motorway and the Heathrow night time flight path.**"*

** The above information can be confirmed by Buckinghamshire County Council, Planning officer Report to: Development Control Committee from the 9th of April 2002.*

Heathrow | London Concrete Plant | 10 December 2005



On the left London Concrete's plant in Heathrow can be seen from the motorway.

Wembley

*Great Central Way
Neasden,
London, NW10 0UP*



London Concrete's plant in Wembley is situated on the side of a heavy and dirty industrial estate. Bardon Aggregates' site is right next to London Concrete. Other businesses on site adjoining London Concrete include a car scrap yard, waste transfer (Powerday), skip hire and plant hire.

The front of the plant overlooks a non-residential area with superstores close by.

The site is very close to the North Circular (A406) dual carriageway.

Wembley | London Concrete | 1 January 2006



London Concrete plant taken from the Great Central Way. Bardon Aggregates Depot on the right hand side.

Wembley | London Concrete's neighbours on site | 8 November 2005



This picture of a car scrap yard was taken at the rear of the London Concrete batching plant (off Neasden Lane, by Neasden tube station). Like in other plants I visited, some sort of emissions can be seen.

I would like to urge you to take a look at the companies neighbouring London Concrete, when you are visiting this site.

I firmly believe that if London Concrete move into Cranford Way, other heavy industries will inevitably follow.

Wembley | London Concrete's neighbours on site | 8 November 2005



This picture shows the waste being processed by Powerday to the rear of London Concrete's site.

Brentford

*Transport Avenue
Great West Road
Brentford
London, TW8 9HQ*



This site is just off the A4 West Road dual carriageway. This industrial area is also home to another waste transfer company - West Waste, two metal recycling companies, a marble, slate and granite supplier, a self storage company, a roofing materials supplier and an asbestos removal company.

*This site too **is not** in a densely populated area.*

Brentford | Transport Avenue & A4 West Road Junction | 10 December 2005



This picture was taken at the junction of Transport Avenue leading into the A4 West Road looking towards the East (Central London).

This shows the gravel residue on the side of the road deposited by lorries exiting the site.

Brentford | London Concrete's neighbours on site | 10 December 2005



View of entrance to Express Asphalt plant adjoining London Concrete site. Please note the pyramidal logo in the sign. It is identical to and shared by all the companies associated with London Concrete, like Aggregate Industries, Bardon Aggregates and Concrete and Express Asphalt.

Brentford | Spillage on Transport Avenue | 10 December 2005



This main picture to the left shows the residue of spillage in the middle of the road within Transport Avenue.

Above picture shows spillage by and on the kerbside in Transport Avenue.

Tolworth

*Station Road, Kingston Road
Tolworth,
Surrey, KT3 9NU*



London Concrete's batching plant has not yet started construction. This location is surrounded by Tolworth BR station, a Routemaster bus depot, open fields and a motocross park. There is direct access to the A3 Kingston Bypass and the A240 from this site.

Local residents have their own access roads on either side of this dual carriageway.

I spoke to a good cross section of local people living and working near this site. Everyone I spoke to was unaware of London Concrete plans to build a Concrete Batching Plant in the area and therefore did not know the exact location allocated to it.

Tolworth | A3 Kingston By Pass | 31 December 2005 |



The future Concrete batching plant in Tolworth would be built just off the A3 Kingston By Pass and A240 which crosses it.

Tolworth | A240 Kingston Road | 31 December 2005 |



You could also access London Concrete's future site from the A240 featured to the left

In the picture below you can see the entrance to the site.



Tolworth | Pre London Concrete | 31 December 2005 |



The picture above was taken from the Bus Depot looking towards Jubilee Way.



The picture to the left was taken from Jubilee Way looking at the bus depot next to the site London Concrete's batching plant is to be built.

Cranford Way

*Cranford Way
Hornsey
London N8 9DG*



Cranford Way is a light industrial estate off Tottenham Lane. Business operating from this site range from Warehousing, Self Storage units, Distribution, Food Storage and Silk Printing. The pictures in this section show Cranford Way to be presentable, clean and tidy which corresponds to the nature of the businesses on this site and suitable to it's location being in such close proximity to many family homes. Cranford way is in the middle of a densely residential area with many schools and play areas as close as 60 - 70 meters. It's right next to the Stroud Green Railway Bank, an ecological site of great importance and home to many species of wild life.

An introduction of heavy industry to this site would be wholly inappropriate and would have a negative impact on the health and well being of people living and working in this area, local employment and nature conservation of sites which are situated in close proximity.

Cranford Way | Entrance | 11 December 2005



The entrance of Cranford Way is well maintained with flower beds and in this picture Xmas lights are decorating the well trimmed tree on the right.

Cranford Way | 11 December 2005



This picture on Cranford Way was taken on the day the Oil Refinery in Hemel Hempstead exploded. Despite the fact that the accident occurred many miles away from Cranford Way, the pollution from this explosion was clearly visible to the naked eye.

It goes to show that accidents do happen and pollution could be carried a long way away from where it originated.

Cranford Way | WH Smith | 11 December 2005|



*WH Smith warehouse in
Cranford Way*

Cranford Way | 11 December 2005



The units at the end of Cranford Way are right next to the London Concrete proposed site. If approved the batching plant silo and storage bins will tower 2 stories above all existing buildings there.

The Green Corridor behind this building will be concreted over to facilitate the storage bins and associated hoppers.

Cranford way | 1 January 2006



The unique and uninterrupted views from Chettle Court captures Alexandra Palace (above) to the north, suburban skyline to the east and city skyline to the south.

My wish for the new year is that this stays unchanged in the future